



Configuring IPv6 Firewalls with Windows XP SP2

János Mohácsi
NIIF/HUNGARNET



Windows XP Firewall configuration

- Windows XP ICF – same rules for IPv4 and IPv6
 - Show configuration:
 - `netsh firewall show config`
 - Set configuration
 - `set icmpsetting [type =] 2-5|8-9|11-13|17|ALL [[mode =] ENABLE|DISABLE [profile =] CURRENT|DOMAIN|STANDARD|ALL [interface =] name]`
 - `set opmode [mode =] ENABLE|DISABLE [[exceptions =] ENABLE|DISABLE [profile =] CURRENT|DOMAIN|STANDARD|ALL [interface =] name]`
 - `add portopening [protocol =] TCP|UDP|ALL [port =] 1-65535 [name =] name [[mode =] ENABLE|DISABLE [scope =] ALL|SUBNET|CUSTOM [addresses =] addresses [profile =] CURRENT|DOMAIN|STANDARD|ALL [interface =] name]`
 - `set logging [filelocation=<location>] [filesize=integer] [droppedpackets=enable|disable] [successfulconnections=enable|disable]`

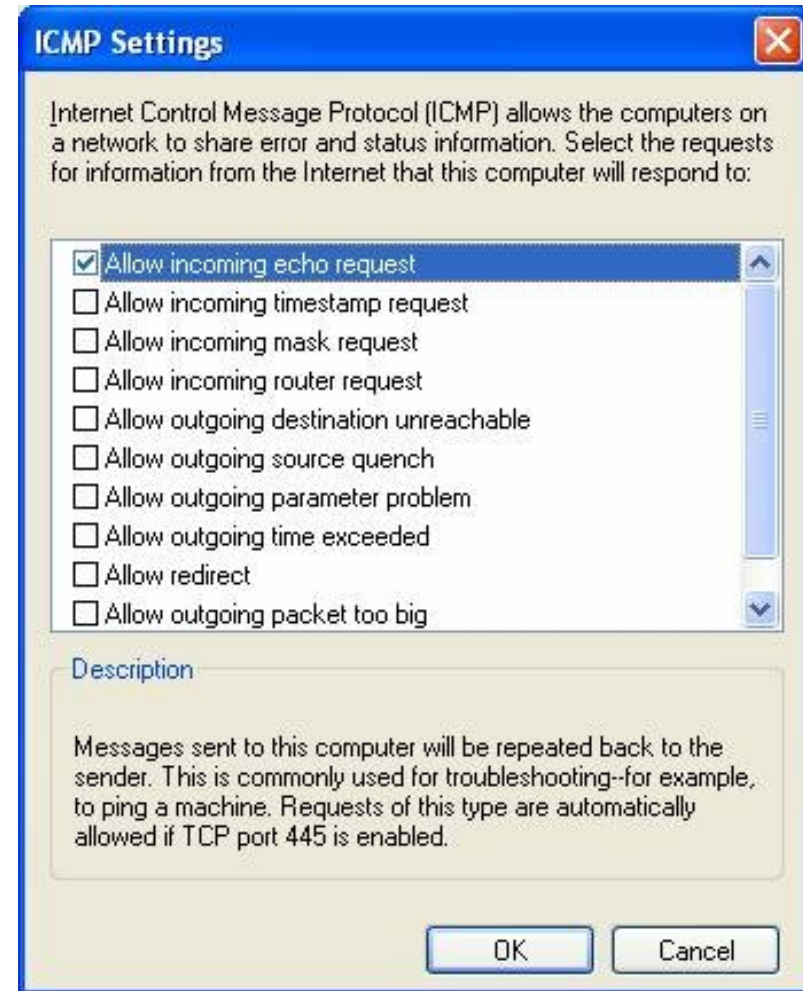
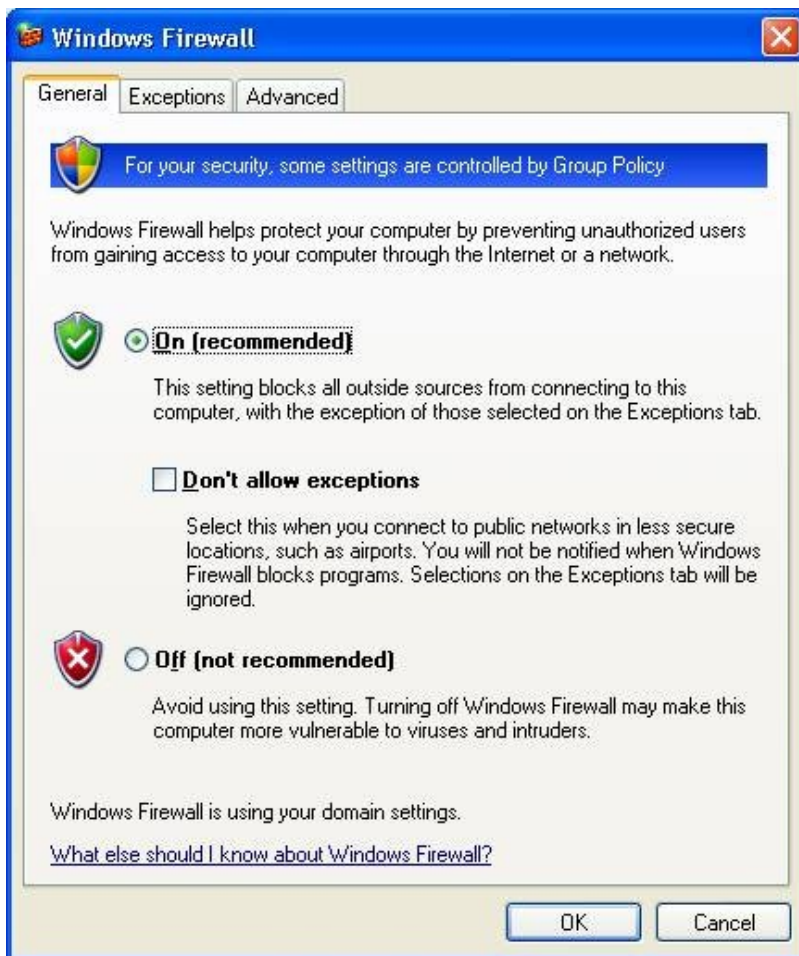


Windows XP Firewall configuration /2

- After SP2
 - in the firewall you can configure Path MTU discovery support
 - per process configuration possible
 - Can be deployed by group configuration



Windows SP2 ICF





Further information

- Further information:
<http://www.microsoft.com/technet/community/columns/cableguy/cg0204.msp>



Exercises

1. Test ping from neighbouring PC
2. Enable Firewall on Windows XP SP2
3. Test ping from the neighbouring PC
4. Enable ICMP echo + Path MTU discovery to work